

# SR18M/P 振动压路机

## Vibratory Rollers

SR18M压路机是以柴油机为动力的铰接式单钢轮振动压实机械，适用于道路、广场、机场和海港建设中，是现代化高等级公路及其它工程基础设施建设中不可缺少的压实机械。

SHANTUI SR18M road roller powered by diesel engine is vibrating machine with single vibrating wheel and articulated frame. It is the indispensable machine in the construction of road, square, airport, sea port and other construction projects.

该压路机采用铰接式车架，后桥驱动装置，全液压转向系统，机械式变速，因此具有可靠的性能和最佳的功能价格比，其主要特点如下：

- ◆ 配备玉柴具有国内先进水平的YC6108ZG柴油机，功率强大、性能可靠、清洁环保；
- ◆ 采用机械传动、单桥驱动、轮边减速，变速箱采用带有同步换向器的机械变速箱(汽车换挡形式的变速箱，部件通用性高，维修保养成本降低)，具有变速换向和手制动三项功能，其变速换向操纵采用单杆操纵，操纵轻便，安全可靠，极大的减轻了驾驶员的劳动强度。
- ◆ 带差速器和钳盘式制动器的后桥，机械驱动，具有强大的牵引力和良好的通过性能；
- ◆ 采用铰接式车架，全液压转向，转向半径小，操作轻便灵活，安全可靠，转向器采用进口产品，配有FK组合阀，具有流量大，转向操纵力小，过载保护及缓冲等特点，结构紧凑，维修方便，车架铰接点及转向油缸支点都装有轴承，转向灵活；



◆ 振动轮采用新型结构，具有偏心质量大、激振力大、振动轮静线压力大等特点。振动室内设有独特的润滑装置，给振动轴承以充分地润滑，延长了轴承的使用寿命。振动轴承为德国进口振动轴承，其承载能力比同类型的日本NSK轴承大30%。

◆ 制动系统：行车制动系统采用气顶液、钳盘式制动器；停车制动采用机械操纵、内涨鼓式制动；操纵轻便，制动力大，结构紧凑、拆装方便，安全可靠；两套独立的制动系统保证了行使时的安全和可靠。

◆ 全封闭驾驶室，视野开阔，宽敞明亮；后机罩采用玻璃钢成型材料，流线型造型使整机美观大方，视野更加开阔。

◆ 仪表台采用可调式结构，前后调节，减轻驾驶员的劳动强度。

The SR18M adopts articulated frame, rear axle driving, hydraulic steering system, mechanical transmission which endures this machine high quality and reliability with competitive price. The main characters:

- ◆ Advanced YUCHAI YC6108G diesel engine, powerful, high reliable and protecting environment;
- ◆ Mechanical transmission, single driving axle, wheel decelerate. Transmission box with synchro-commentator, (similar to car shift transmission, easy maintenance) has the function of steering, shifting and hand brake. The steering and shifting are controlled by one lever which is easy control and reliable.
- ◆ The rear axle with differential and disc brake, mechanical drive, powerful traction and good pass ability.
- ◆ Articulated frame, full hydraulic steering, short turning radius, compact structure, easy maintenance, frame articulated point and steering cylinder fulcrum with joint bearing.
- ◆ Vibrating roller with new structure, big off-center mass, centrifugal force and static liner load. Special designed lubrication equipment in vibratory room, lengthens the service time of vibrating bearing.
- ◆ Brake system: Service brake: air assisted oil disc type; Parking brake: mechanical control, inner expand drum brake. Easy control with powerful brake, separate brake system with high reliability.
- ◆ Full sealed cabin with wide view and high comfort.

### 发动机ENGINE

型号Model.....YC6108ZG  
 额定功率Rated horsepower.....110kw  
 额定转速Rated revolution..... 2100r/min  
 冷却方式Cooling way.....水冷Water cooled

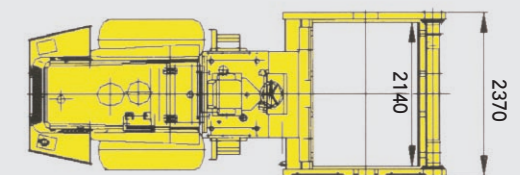
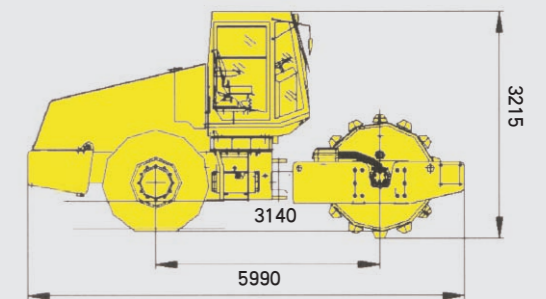
### 行驶速度TRAVELLING SPEED

速度档Gear	I 档1st	II 档2nd	III 档3nd
前进Forward(km/h)	0-2.2	0-4.3	0-9.1
后退Reverse(km/h)	0-2.2	0-4.3	/

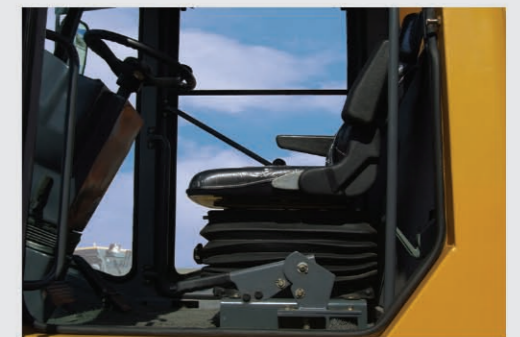
内 容 Model		SR18M
工作质量OPerating weight(kg)		18000
工作质量分配kg Weight Distribution	前轮Front wheel	9000
	后轮Rear wheel	9000
前轮 Front wheel	(数量 Number/个Piece)	1
	直径×宽度mm-Diameter×Width	1550×2140
后轮轮胎 Rear tyrb	(数量 Number/个Piece)	2
	宽度Width mm	23.1
轮胎气压Type air piessure (Mpa)		0.18-2.10
激振力Centrifugal force(KN)		335/190
振动频率Vibrating frequency(Hz)		30
理论振幅Theoretic amplitude(mm)		2.0/1.0
行走传动形式Driving type		机械Mechanical
振动传动形式Vibratron Drive type		液压Hydraulic
液压传动形式Steering Drive type		液压Hydraulic
最小转弯直径Min.turning radius(m)		6.1
爬坡能力Climbing ability(%)		30
静线载荷Static linear load(N/cm)		420
最小离地间隙Min.ground clearance(mm)		395
轴距Wheel base(mm)		3140
转向角度Maximum steering lock angle(°)		±36
摆动角度Vertial oscillation(°)		±15

### 外形尺寸OVERALL DIMENSIONS

长×宽×高(mm) L×W×H.....5990×2370×3215



操纵台仪表盘为电子监控，声光报警显示，结构紧凑，造型美观，可前后自由调整，操作舒适；外观为塑壳造型，符合当前国际流行趋势



宽敞的驾驶室和空调设备为驾驶员提供了舒适的工作环境，可根据客户需求配置单冷或冷暖两用空调。